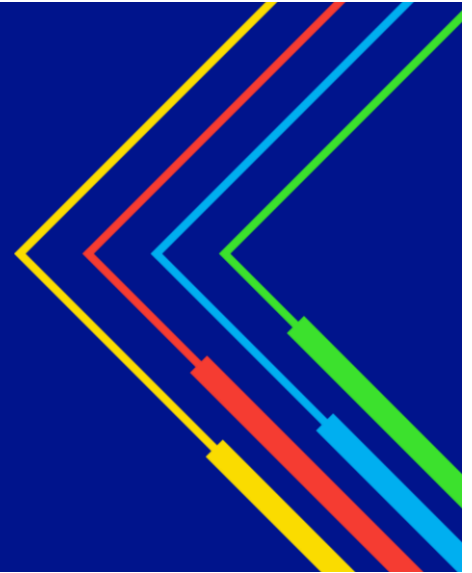


# National Grid's Engineering Pipeline Program



National Grid's Engineering Pipeline Program offers high school students the chance to learn more about National Grid and the engineering profession through a structured six-year program. It is a chance to translate the students interest in science, technology, engineering or mathematics into a future career of your choice.

As a Scholar in the Engineering Pipeline Program, you will be given the opportunity to gain exposure to the engineering industry through instruction, in and out of the classroom, site visits, research and projects. Highlights include interacting with real life engineers as mentors, networking with fellow program participants, participating in job shadowing to experience a “day in the life of,” and opportunities for paid internships. The end result could be a career with National Grid once graduated from college.

During the first two years, EPP Scholars take part in two half-week summer programs, which include classroom and hands-on activities on the following topics: introduction to the energy industry, natural gas operations, electric power systems, the future of energy, gas engineering, electric engineering, sustainable energy, along with panel discussions with National Grid engineers regarding their education, interests and career.

If you are interested in enrolling in the Engineering Pipeline Program, the application period occurs from, **now through April 26<sup>th</sup>**. You must:

- Have an interest in science, technology, engineering or mathematics
- Currently be enrolled in their junior year of high school
- Hold a minimum cumulative GPA of 87 out of 100

## How Can You Apply?

- Complete the [Engineering Pipeline Program Application Supplement](#) which includes a 250- word essay explaining your desire to learn about engineering, parental consent form and two teacher evaluation forms
- Visit <https://careers.nationalgridus.com> and use the search box to search for “Engineering Pipeline Program”
- Select the Engineering Pipeline program that is delivered in your region (DNY - Melville, NY; UNY - Liverpool, NY; NE - Millbury, MA).
- Click “Apply Now,” register as a new user, and complete the required application fields.
- Upload your completed application supplement and high school transcript to your application files.
- Ensure you complete all steps in the application – you will receive a confirmation email once completed. If you do not complete all the steps, your application will not be considered.

Any problems with the online application or questions, please contact National Grid at [EPP.US@nationalgrid.com](mailto:EPP.US@nationalgrid.com) and in the subject line type: EPP