



# SKANEATELES Central School District

Shareholder's Report 2022

## 2022-2023 Budget Vote:

# May 17, 2022

### BUDGET VOTE & BOARD OF EDUCATION ELECTION

**Tuesday,  
May 17, 2022  
7:00 am - 9:00 pm**

**District Office  
45 East Elizabeth Street  
Skaneateles, NY 13152**

### Inside this Issue

Budget Summary .....	2
Estimated Revenues .....	3
Tax Comparison.....	4
Measures of Success.....	5
Ballot Propositions.....	6
BOE Candidates.....	7
Thank You.....	8
Focus of Investments .....	8
Valedictorian & Salutatorian .....	9
Music in our Schools/Hydroponics Lab Visit ...	10
Capital Project Update .....	11
Budget Notice .....	12

### Budget Facts

#### Proposed Budget

**\$37,407,110**

#### Year Over Year Increase

**\$1,488,884 (4.15% increase)**

#### Estimated Tax Levy

**\$27,272,284 (2.56% increase)**

### Dear Skaneateles Family,

It is hard to believe we are approaching the end of our first uninterrupted school year since March of 2020. While the past years brought so many complications, challenges and disruptions to our lives, this year the excitement and enthusiasm for moving forward as a school and community was palpable. We continue to be so proud of our students, faculty, staff and administration for the perseverance and dedication demonstrated over these past 2 years.

Beginning in September, our students will enjoy a new science of reading aligned ELA curriculum deployed in grades K-8. This is a remarkable accomplishment for any school district but to have achieved this during a pandemic is truly impressive. The planning, preparation and hard work required to make these changes are commendable and our students will benefit from new and targeted instruction in literacy for a generation. In grades 9-12 we continue to offer a wide range of challenging opportunities to our students with offerings that rival any school in the State and in continuation of our National Blue Ribbon Award winning tradition of excellence.

The social-emotional and mental health needs we are seeing in schools continue to increase and we are proud to have taken a lead in the region in planning for and providing much needed services and supports for our students and families. Our services this year have expanded to include targeted coordination of services, universal screening, expanded community partnerships, licensed clinicians on site and community access coordination to support both our students and their families. Our Skaneateles staff of school psychologists, social workers, school counselors, teachers and administrators continue to make deliberate and critical connections with our students in need. We will continue to work with our community to make adjustments and add services and supports to ensure that every child at Skaneateles Schools feels safe, connected and supported.

On campus you can see the final stages of Project 2021 including completion of our new auditorium and performance spaces at Waterman Elementary and our High School, as well as a new Middle School gymnasium, High Schools stadium and improvements to a variety of classrooms and multi-use instructional spaces throughout the district. We continue to expand our rigorous program of study and offer opportunities for our students to pursue a wide variety of interests in academics, extracurriculars, arts and athletics.

On behalf of our entire faculty, staff, administration and Board of Education, we thank you for the ongoing support required to get each and every one of our students what they need to be successful. I would like to publicly acknowledge the incredible hard work, dedication and ongoing courage demonstrated by our entire faculty, staff and administration that made this school year a possibility for our children.

This report outlines the ways we invest in the future of our children and explains the proposed 2022-2023 School Budget. We invite you to attend our Annual Student Art Exhibit at our District Offices which will be available during the school budget vote and School Board Election on May 17, 2022 from 7:00 am to 9:00 pm. If you have any questions about the upcoming budget vote, please contact our District Office. A great deal of additional budget resources and information can be found on the budget page on the school website [www.skanschools.org](http://www.skanschools.org)

**Stronger together,  
Eric Knuth**

Superintendent of Schools

## 2022-2023 Proposed Budget Summary

### PROGRAM

Budget Category	2021-2022 Budget	2022-2023 Budget	Dollar Change	Percent Change
Regular School	9,959,484	10,469,242	509,758	5.12%
Prog. For Students w/ Disabilities	3,105,970	3,121,116	15,146	0.49%
Occupational Education	347,425	353,373	5,948	1.71%
School Library/AV	429,283	439,362	10,079	2.35%
BOCES Legal/Other Legal Services	74,485	73,387	(1,098)	-1.47%
Computer Assisted Instruction	993,171	959,458	(33,713)	-3.39%
Attendance/Guidance	449,265	464,727	15,462	3.44%
Health Services	228,133	234,795	6,662	2.92%
Psychological and Social Work	439,907	449,684	9,777	2.22%
Co-Curricular and Athletics	934,894	996,630	61,736	6.60%
Transportation	1,501,305	1,472,134	(29,171)	-1.94%
Other Transfer	138,000	132,000	(6,000)	-4.35%
Employee Benefits	5,232,307	5,370,169	137,862	2.63%
<b>Totals</b>	<b>23,833,629</b>	<b>24,536,077</b>	<b>702,448</b>	<b>2.95%</b>

### CAPITAL

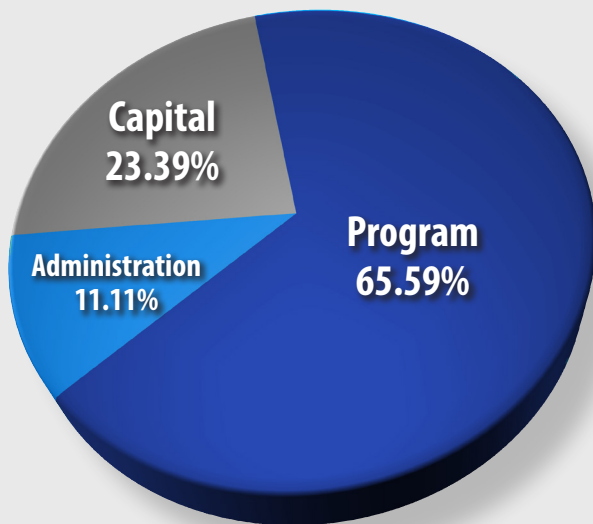
Operation of Plant	1,764,573	1,923,634	159,061	9.01%
Maintenance of Plant	641,952	666,488	24,536	3.82%
Security of Plant	70,000	80,000	10,000	14.29%
Other Insurance, Dues & Tax Refunds	175,395	168,595	(6,800)	-3.88%
Debt Service	4,822,317	5,281,484	459,167	9.52%
Transfer to Capital	100,000	135,000	35,000	35.00%
Employee Benefits	568,120	458,429	(109,691)	-19.31%
<b>Totals</b>	<b>8,142,357</b>	<b>8,713,630</b>	<b>571,273</b>	<b>7.02%</b>

### ADMINISTRATION

District Office	871,700	860,004	(11,696)	-1.34%
Public Information Services	70,608	92,904	22,296	31.58%
Central Printing and Mailing	132,500	138,369	5,869	4.43%
Central Data Processing	333,773	367,681	33,908	10.16%
Board of Education	31,268	31,634	366	1.17%
BOCES Capital and Administration	316,747	341,625	24,878	7.85%
Curriculum Coordination and Summer PD	334,266	341,560	7,294	2.18%
Supervision	898,473	1,023,025	124,552	13.86%
Research Evaluation and Planning	202,623	207,487	4,864	2.40%
In-Service Training and Instruction	35,571	32,725	(2,846)	-8.00%
Employee Benefits	714,711	720,389	5,678	0.79%
<b>Totals</b>	<b>3,942,240</b>	<b>4,157,403</b>	<b>215,163</b>	<b>5.46%</b>
<b>Budget Total</b>	<b>35,918,226</b>	<b>37,407,110</b>	<b>1,488,884</b>	<b>4.15%</b>

For a more detailed explanation of the proposed budget, visit [www.skanschools.org](http://www.skanschools.org)

## Three-Part Budget



### Program: 65.59%

Program expenses are the largest portion of the school district's budget. Funds are used on expenses directly related to and have an impact on classroom instruction. Expenses include but are not limited to teacher and support staff salaries, BOCES programs, special education services, learning materials, extra-curricular activities, technology and professional development.

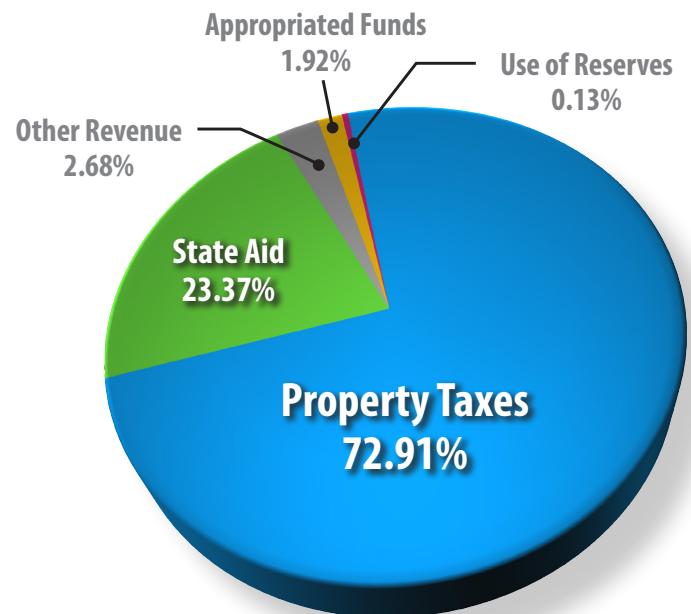
### Capital: 23.29%

Capital expenses make up the second largest portion of the school district's budget. Funds are used on expenses that keep our buildings functioning and clean which include but are not limited to custodial, maintenance and grounds salaries, utilities, service contracts and debt service payments.

### Administration: 11.11%

Administrative expenses make up the smallest portion of the school district's budget. Expenses include but are not limited to ordinary business office functions, curriculum and professional development, BOCES services, legal services, and administrative oversight.

## 2022-2023 Estimated Revenues



The revenues for Skaneateles Central School District come from multiple sources to help fund our programs and initiatives. The two primary sources include property taxes and state aid.

The proposed 2022-2023 property tax levy is estimated to be \$27,272,284 or 72.91% of the total revenues. This amount is up 2.56% or \$680,743 above the 2021-2022 school year which is below the allowable 2.84% tax cap calculation.

State funding accounts for 23.37% or \$8,367,470.00 of the 2022-2023 budget. Most of this revenue sources is made up of foundation aid (52.15%) and building aid from capital improvement projects (30.99%). Other state aid includes BOCES, transportation, excess cost and instructional materials aid.

Other sources of revenue include sale of equipment/buses, PILOT's, county sales tax, refunds of prior year expenses, and other miscellaneous items.

Revenue	2021-2022	2022-2023	Dollar Change	Percent Change
Property Taxes	26,591,541.00	27,272,284.00	680,743.00	2.56%
State Aid	7,603,968.00	8,367,470.00	763,502.00	10.04%
Other Tax Revenue	278,196.00	292,737.00	14,541.00	5.23%
Charges for Services	211,339.00	239,750.00	28,411.00	13.44%
Equipment Sales	122,000.00	145,000.00	23,000.00	18.85%
Refund of Prior Year Expenses	125,000.00	275,000.00	150,000.00	120.00%
Gifts/Donations and Other	9,000.00	9,000.00	-	0.00%
Interfund Transfers	229,291.00	9,500.00	(219,791.00)	-95.86%
Medicaid Reimbursement	30,000.00	30,000.00	-	0.00%
<b>Total Revenue</b>	<b>35,200,335.00</b>	<b>36,640,741.00</b>	<b>1,440,406.00</b>	<b>4.09%</b>
Use of EBALR Reserve	57,891.00	47,926.00	(9,965.00)	-17.21%
Use of Unemployment Reserve	85,000.00	-	(85,000.00)	-100.00%
Appropriated Fund Balance	575,000.00	718,443.00	143,443.00	24.95%
<b>Total Budget</b>	<b>35,918,226.00</b>	<b>37,407,110.00</b>	<b>1,488,884.00</b>	<b>4.15%</b>



## Harlem Wizards Return to Skaneateles

In March, the Harlem Wizards returned to Skaneateles to take on our LakeTrotters! Our students, staff, administration, and families took part in a great game, thanks to the efforts of our PTC!



	2021-2022 Actual	2022-2023 Projected	Change in Rate	Percent Increase
<b>Skaneateles</b>	14.078	14.439	\$0.36	2.56%
<b>Spafford</b>	15.342	15.735	\$0.39	2.56%
<b>Marcellus</b>	11.967	12.273	\$0.31	2.56%
<b>Sennett</b>	13.296	13.637	\$0.34	2.56%
<b>Owasco</b>	16.621	17.047	\$0.43	2.56%
<b>Niles</b>	11.967	12.273	\$0.31	2.56%
* Per \$1,000 of Assessed Value				

### Disclaimer:

The tax rates to the left are the projected tax rates for the 2022-2023 school year. These rates were calculated using tentative home assessments on hand for the district. These rates are subject to change as home assessment values and equalization rates in each of the towns are not finalized until the summer of 2022. This is for illustrative purposes only and individual tax increases or decreases for each homeowner may vary based on assessment and equalization rate changes which the school district has no control over.

### Example Calculation on a Tax Bill Located in Skaneateles at 2.56% Tax Increase



#### Actual 2021-2022 Tax Bill

House Assessment Value		325,500
Divide by 1,000	/	1,000
<hr/>		
\$1,000 of Assessed		325.50
Multiply by Projected Tax Rate	X	14.078464
<hr/>		
Proj. Tax Bill Without Basic STAR		\$4,582.54
Subtract Max. Basic STAR Amount	-	\$389.00
<b>Final Projected Tax Bill</b>		<b>\$4,193.54</b>



#### Projected 2022-2023 Tax Bill

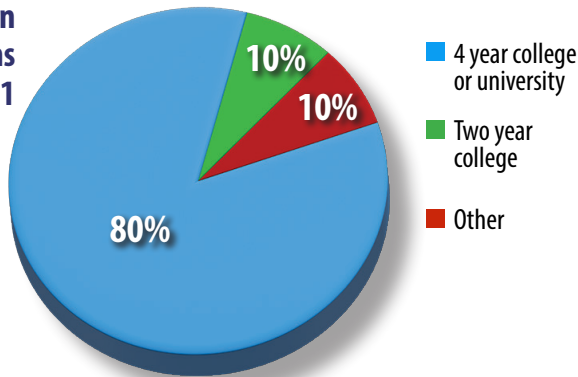
House Assessment Value		325,500
Divide by 1,000	/	1,000
<hr/>		
\$1,000 of Assessed		325.50
Multiply by Projected Tax Rate	X	14.438873
<hr/>		
Proj. Tax Bill Without Basic STAR		\$4,699.85
Subtract Max. Basic STAR Amount	-	\$389.00
<b>Final Projected Tax Bill</b>		<b>\$4,310.85</b>

**Projected Year over Year Annual Increase: \$117.31**

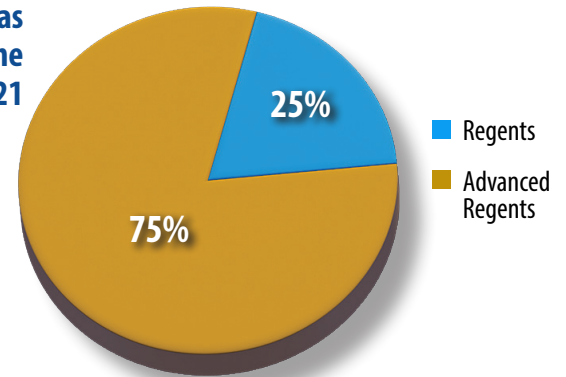


## Our Measures of Success

**Graduation  
Destinations  
2021**

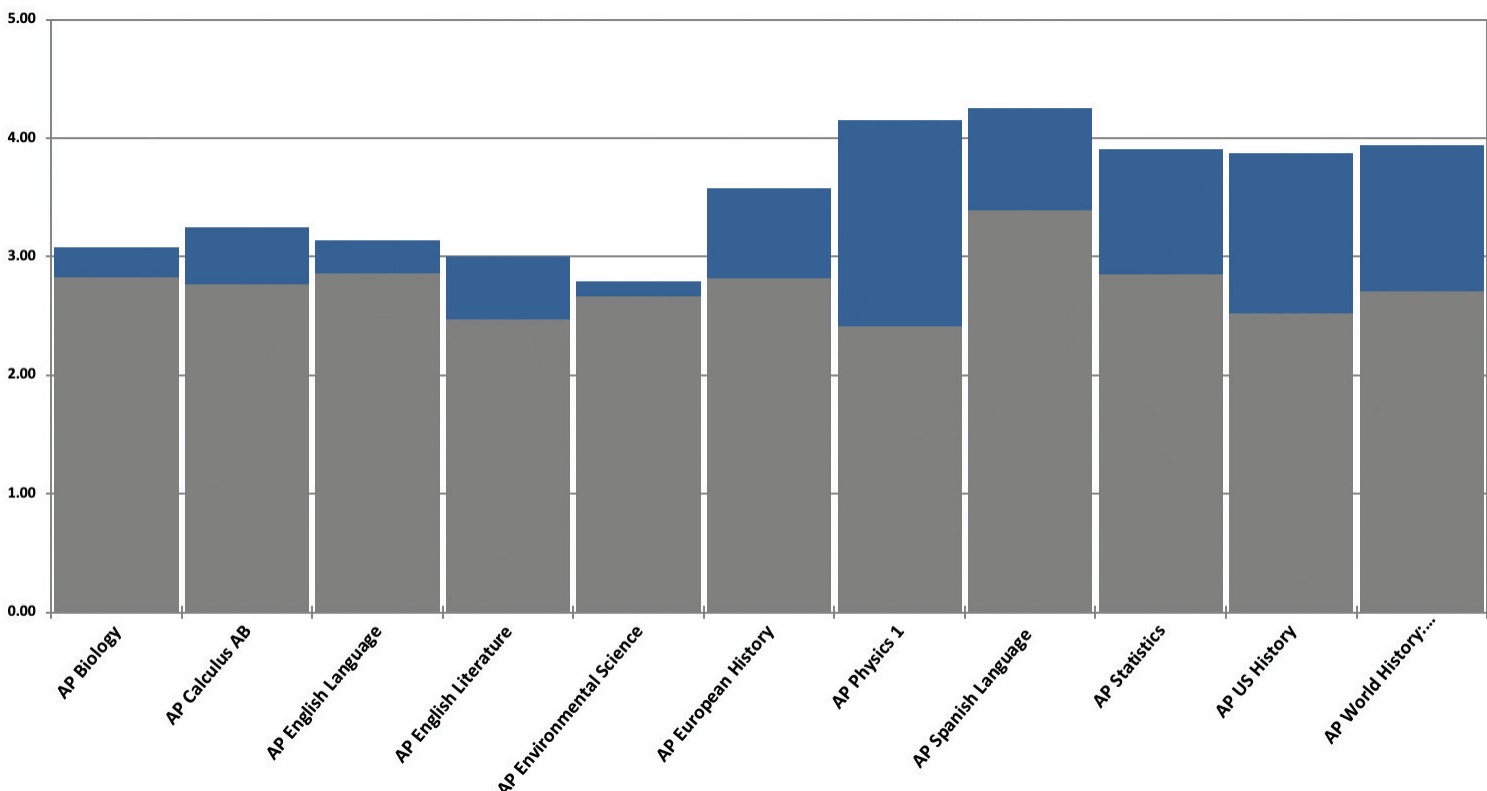
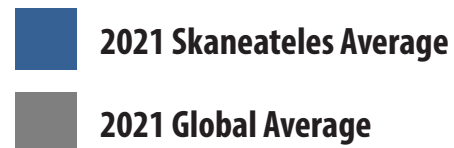


**Diplomas  
Earned by the  
Class of 2021**



AP Exam Results	2021 Skan. Avg.	2021 Global Avg.
AP Biology	3.08	2.83
AP Calculus AB	3.25	2.77
AP English Language	3.14	2.86
AP English Literature	3.00	2.47
AP Environmental Science	2.79	2.67
AP European History	3.58	2.82
AP Physics 1	4.15	2.41
AP Spanish Language	4.25	3.39
AP Statistics	3.91	2.85
AP US History	3.87	2.52
AP World History: Modern	3.94	2.71

AP Participation	2021
Percent of Eligible Students (gr. 10-12) in at least 1 AP Class	53.7%
Number of AP Exams Taken	340



## What Will You See When You Vote?

### Proposition I



#### General Fund Budget

Shall the Board of Education of the Skaneateles Central School District, Counties of Onondaga and Cayuga, New York, be authorized to expend the sum of \$37,407,110 for the 2022-2023 school year and levy the necessary taxes when due.

### Proposition II



#### Bus Purchase

Shall the Board of Education of the Skaneateles Central School District be authorized to purchase and finance replacement student transport vehicles, including necessary furnishings, fixtures and equipment and all other costs incidental thereto, and expend a total sum not to exceed \$501,000, which is estimated to be the total maximum cost thereof, and said amount, or so much thereof as may be necessary, shall be raised by the levy of a tax upon the taxable property of said School District and collected in annual installments as provided by Section 416 of the Education Law; and, in anticipation of such tax, obligations of said School District, in the principal amount not to exceed \$501,000, shall be issued.

### Proposition III



#### Skaneateles Library *(Separate from the school district budget)*

Shall the sum to be raised by annual levy of a tax upon the taxable real property within the Skaneateles Central School District for the purpose of funding the Skaneateles Library Association be increased by \$14,000 to the sum of \$364,000 annually?

## Library Proposition

*This is separate from the school district budget.*

New York State provides residents a direct say in local library funding via a proposition on their school district's budget ballot. Skaneateles CSD merely collects funds approved by the voters and disburses them to the library. The two (2) organizations' budgets are unrelated.

The Skaneateles Library is requesting a 4% increase in its annual tax levy to offset operational expenses brought on by inflation and minimum wage increases. If the proposition is approved, the library's annual levy would increase from \$350,000 to \$364,000 - an increase of \$14,000.

This is the first proposed increase since the library started receiving public funds in 2016. Before voters approved the annual levy in 2016, Skaneateles was one of only two libraries in the state that did not receive any public funds.

### What a 4% Increase Means for Each Household

The following table illustrates what a 4% increase would mean for a range of property values, as well as the new annual totals for these properties. \$348,932 is the average and \$225,000 is the median property value in our district.

Town of Skaneateles* Assessed Property Value	\$200,000	\$400,000	\$800,000
Current annual library levy	\$37.06	\$74.12	\$148.24
<b>Increase per household</b>	<b>\$1.48</b>	<b>\$2.96</b>	<b>\$5.92</b>
Total 2022-23 library levy with 4% increase	\$38.54	\$77.08	\$154.16

*\*Values vary slightly but are very similar for the municipalities of Owasco, Spafford, Sennett, Niles and Marcellus — portions of which are in the Skaneateles Central School District.*

For more information and answers to any questions, please go to:  
<https://www.skanlibrary.org/about/board/tax-levy-vote/>



## Board of Education: Candidates for Election

On May 17, residents will elect four members of the Board of Education. The two candidates with the highest number of votes will each serve complete three-year terms; the next two, in order of the next highest vote totals, will serve the remainder of the unexpired terms ending in 2024 and 2023.

*Below are candidates that filed nominating petitions for the available seats:*



**Jeff Goldberger**

Jeff is passionate about the quality of education in Skaneateles and has been an active participant during Skaneateles BOE meetings. He is a member of the School District's Strategic Planning Group, Treasurer of the Skaneateles Girls Hockey Boosters and coached Skaneateles Youth Soccer for five years. Jeff and his wife, Chen, moved to Skaneateles in 2010 from Marcellus and have 3 children in the school ages 11, 14 and 16. Jeff graduated from Clarkson University and has 20 years of experience as an Electrical Engineer. Jeff is a systematic thinker, easy to approach and enjoys playing soccer and baseball with his children. Jeff believes in Age-Appropriate Curriculum, Protecting Parental Rights, increasing Transparency and Small-Town Community Values such as Parental Involvement, Valuing Teachers and Students as unique individuals and the Laker Values of: Leadership, Accountability, Kindness, Effort and Respect.



**Danielle Fleckenstein**

As a resident, active community member and a parent of two students in the Skaneateles district, Danielle Fleckenstein understands the integral role our schools play in cultivating and maintaining a healthy, happy, balanced community.

Danielle believes the success of our schools is measured by maintaining a balance of fiscal responsibility, while creating stability and offering a wide-range of academic, athletic and extracurricular opportunities, so every student and family feels they have a place and voice in our schools. She recognizes that each student comes with their own strengths, differences, and interests, which should be welcomed and celebrated. She understands the importance of ensuring that every child is provided the opportunity to succeed at their own individual highest level and find a sense of belonging.

If elected for her 2nd term on the Skaneateles Board of Education, Danielle will continue to ask questions and seek to find the necessary information in order to make informed decisions on behalf of students, parents and community members. Danielle feels our decisions as a district should be made keeping our students at the center of it all, while preserving the financial health of the district.

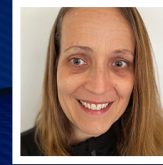


**Gary Campbell**

A Skaneateles resident since 2004, Gary currently serves on the Skaneateles BOE, holds an MBA and B.Sc. Engineering and has served in senior leadership roles in the US and abroad.

Gary's immersion in different cultures has reinforced the value, benefits and importance of teamwork, community involvement, diversity of perspectives, inclusion, tolerance, and strategic planning. While our district has greatly benefited from the foundation established over prior decades, Gary believes that the advent of the COVID-19 pandemic coupled with pervasive digital media now warrants a more strategic, forward leaning, tolerant and fiscally astute governance team; one that can simultaneously be receptive to all inputs whilst harnessing the narrative for broad-based success. Specifically, while continuing to elevate our focus on high-quality curriculum, instruction and assessment, Gary prioritizes the social, emotional, and mental health of all stakeholders (students, educators, administrators and community members) as being the foundation upon which the enduring success of K-12 education is based and as such needs to be the overarching focus of our efforts at sustainable success.

Gary is grateful for the privilege of your support in continuing this work with the BOE to serve our Skaneateles community.



**Tonya Coleman**

I am a wife to my husband Matthew of 18 years, and a mom to two children in the district, Lillian and Samuel. My husband and I both graduated from ACP in 2003. My husband is a leader with the pharmacy team at Upstate Hospital. I began my 15-year journey as a Skaneateles community pharmacist in 2004. As a supervisor at Kinney Drugs, I was involved with the pharmacy budget with a focus on payroll and inventory management.

Matthew and I have volunteered and supported school opportunities that build character, as I believe the education provided by all professions should be a fundamental part of our children's success.

I am excited for the opportunity to be a bigger part of this passionate and caring community. I am looking forward to the opportunity to help the education at every level in SCSD be the best it can be.



**Tim Chiavara**

Tim is no stranger to Skaneateles having been a prominent member of the Skaneateles Schools for 20 years - serving in 3 different positions (High School VP & Athletic Director and Middle School Principal). Tim is personally invested to making the Skaneateles School district the best it can be; he has 3 grown children, including 1 being a Skaneateles alumna and 7 out of 9 grandchildren attending Skaneateles Schools currently. Tim has been looking for ways to give back to the community, and sharing his expertise with the School Board seems like the perfect fit. He has been an advocate, organizer and ally, who knows first-hand the power of listening to everyone and how beneficial it can be for everyone when all parties have a seat at the table. This is especially important as the District begins to re-develop their strategic goals and strategies.

### Qualifications of Voters:

- At least 18 years of age.
- Citizen of the United States.
- A resident of the Skaneateles Central School District for at least 30 days prior to the date of the vote.

### Absentee Ballot:

Residents who will not be in the area on May 17, 2022 may apply for an absentee ballot at the District Office. If the absentee ballot is to be mailed to the voter, the application must be submitted at least seven days prior to the vote. If the absentee ballot is to be picked up by the voter in person, applications will be accepted until May 16, 2022. Absentee ballots must be received by the District Clerk no later than 5:00 p.m. on May 17, 2022.

**MAIL TO: Skaneateles Central School District**  
**ATTN: Rebecca York**  
**45 East Elizabeth Street,**  
**Skaneateles, NY 13152**



## The Focus of Our Investments

1,268

Number of K-12 Students

97%  
Graduation  
Rate

52

Interscholastic  
Teams

66

Seniors  
Graduating  
w/honors

\$37,407,110

Proposed 2022-23 Budget

35

High School  
Clubs

8

Musical  
Groups

1

Community

Pages two and three of this newsletter highlight the projected costs and revenues associated with supporting the proposed budget of \$37,407,110 for the 2022-2023 school year. This page highlights some of the ways in which these dollars translate to opportunities for our students. We hope these features shine light on some of the enhancements and services available at Skaneateles.

### Middle School/High School

- Award-winning competitive clubs such as Odyssey of the Mind, Envirothon, DECA, Model UN, Junior Classical League, and Masterminds
- Named Best Community for Music Education by NAMM
- Students received Scholastic Art awards
- Several students selected for All-County Band, Chorus, and Orchestra
- Student-organized musical groups including bell choir, various acapella groups, and cello quartet
- Plethora of curriculum-based clubs such as Environmental Club, Art Club, Laker Writing Club, etc.
- Exploration and addition of student interest based clubs and activities such as Student Athletic Council, Veterans Club, Ski Club, Fishing Club, Trap Club, etc.
- Award-winning theatre program producing a fall play (HS) and spring musicals (HS, MS, SS)

### Elementary (Waterman and State Street)

- Continued training and implementation of Responsive Classroom and Positivity Project to support the district's mission to build relationships, connections and improve overall learning.
- Teacher training in current best practices for literacy instruction.
- Continue implementing the Smithsonian Science materials which are in alignment with Next Generation Science Standards.
- Begin Instrumental Music Instruction in Grade 4, Band and Orchestra
- Begin Chorus and Drama productions in Grade 5



Thank  
you

### To Our Partners:

In Skaneateles, our schools are strengthened by the ongoing support and innovation of our extremely dedicated partners. We are grateful for their amazing commitment to our students!

- Our Alumni
- Booster Clubs
- Ecumenical Council
- Parent Advisory Committees
- Parent Teacher Committees
- Skaneateles Chamber of Commerce
- Skaneateles Education Foundation
- Skaneateles Music Guild
- Skaneateles Library
- Skaneateles Rotary
- Town & Village of Skaneateles



## Ty Allan Jackson Visits Skaneateles

In March, Ty Allan Jackson visited our students to share his experience as an award-winning children's book author! He explained the origin of his first book, "Danny Dollar Millionaire Extraordinaire: The Lemonade Escapade," and showed examples of child entrepreneurs from around the world. He told students that they are here to accomplish great things- whatever they may be- and encouraged them to believe in themselves.

"There are seven billion people on this planet and each person has their own instinctive voice. Write with that voice!" he said.

Our students were thrilled to ask Mr. Jackson lots of questions about his books, inspirations, and personal life.



**THANK YOU** to our community for your continued support of Skaneateles CSD and all of our extracurricular activities!



*Class of* **2022**



*Valedictorian*  
**LILI WINKELMAN**



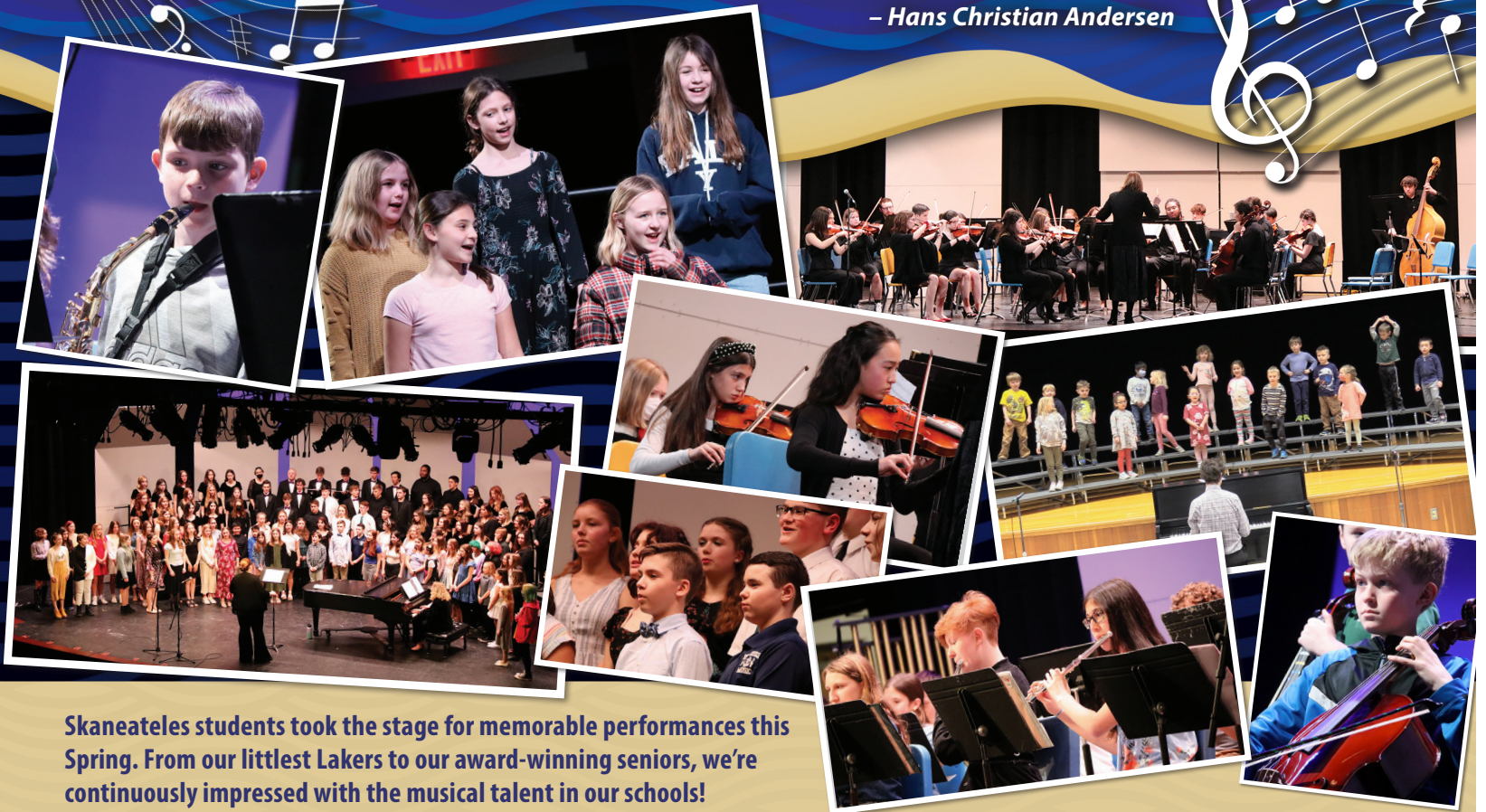
*Salutatorian*  
**ETHAN PICKUP**



# Music in our Schools

*"Where words fail, music speaks."*

– Hans Christian Andersen



Skaneateles students took the stage for memorable performances this Spring. From our littlest Lakers to our award-winning seniors, we're continuously impressed with the musical talent in our schools!

## Third-Grade Students Visit Hydroponics Lab

Third-grade students recently had the opportunity to visit our high school hydroponics lab. Mr. Stagnitta and his students explained how they use fish to grow plants and reuse parts of healthy plants to grow new ones.



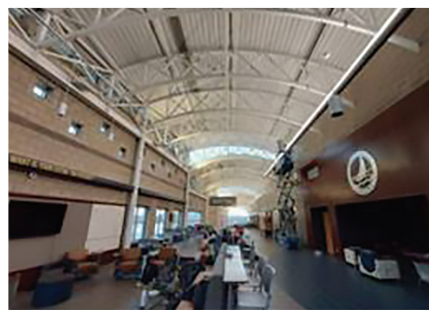


# Capital Project Update

In the Summer of 2022, all construction related to Project 2021 will be coming to a close. Initial planning for this project began back in 2016 and throughout this process we have added and reconstructed numerous instructional spaces that have helped improve our facilities and the learning environments our students and staff occupy each day. Improvements include our new MS gym, HS auditorium, renovations to our Waterman auditorium, addition of the MS third space, MS FACS room, multiple renovated bathrooms, site and light work around campus, new scoreboards on several athletic fields, new learning spaces in the Commons and corridors, 188 new windows through the HS and MS and so much more! For additional information or even a campus tour, please reach out to Connor Brown at [connorbrown@skanschools.org](mailto:connorbrown@skanschools.org).

Architectural and engineering documents for Project 23/24 are currently being reviewed by the State Education Department and should be completed by the start of summer. Once we have final approval, bid documents will be compiled by our architects for bidding to commence in the Fall of 2022. Throughout this project there will be instructional improvements to all school buildings as well as enhancements to the Maintenance Barn, District Office, Concession stand, Transportation Center and athletic fields. We will provide additional information as we approach the start of construction.

The district appreciates the overwhelming support from our community to invest funds in our facilities through these capital projects. We are very understanding of the inconveniences and logistical troubles these construction projects may have on the Skaneateles community. We always attempt to limit these occurrences whenever possible. In the end, our overall goal is provide the best opportunities for our students, staff and community in welcoming environment as we look towards the future.



## Now Hiring: Custodial Positions

- Pending approval of the 2022-2023 budget on May 17th, Skaneateles will be hiring 4 additional custodial employees to help maintain our newly renovated facilities and perform additional general labor tasks. We are seeking highly motivated individuals with a team mentality to join our custodial team.
- **Rate of Pay:** \$15.78 probationary rate and \$16.63 job rate after probationary period ends
- **Start Date:** July 5, 2022

**Additional information will be posted to our website or you can contact Elaine MacLachlan at [emaclach@skanschools.org](mailto:emaclach@skanschools.org) with additional questions.**

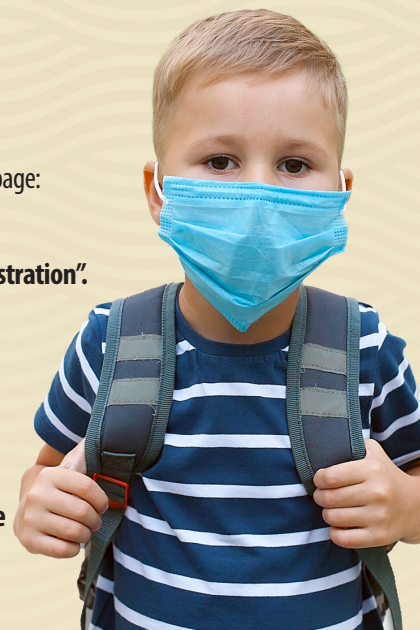
## Kindergarten Registration Is Now Open!

To be eligible, children must be five years old on or before December 1, 2022.

### How to register:

Go to: [www.skanschools.org](http://www.skanschools.org), Skaneateles Central Schools main website page:

- Click on "FAMILIES" tab.
- In the pull-down menu, Click on "Registration".
- Scroll down to "Downloads".
- Click on the following forms:
  - Registration Form
  - Housing Questionnaire
  - Home Language Questionnaire



## Local Post Patron

### School District Budget Notice

Overall Budget Proposal	Budget Adopted for the 2021-22 School Year	Budget Proposed for the 2022-23 School Year	Contingency Budget for the 2022-23 School Year *
Total Budgeted Amount, Not Including Separate Propositions	\$ 35,918,226	\$37,407,110	\$36,726,366
Increase/Decrease for the 2022-23 School Year		\$1,488,884	\$808,140
Percentage Increase/Decrease in Proposed Budget		4.15 %	2.25%
Change in the Consumer Price Index		4.7%	
A. Proposed Levy to Support the Total Budgeted Amount	\$26,591,541	\$27,272,284	
B. Levy to Support Library Debt, if Applicable	\$	\$	
C. Levy for Non-Excludable Propositions, if Applicable **	\$	\$	
D. Total Tax Cap Reserve Amount Used to Reduce Current Year Levy	\$	\$	
E. Total Proposed School Year Tax Levy (A + B + C - D)	\$26,591,541	\$27,272,284	\$26,591,541
F. Total Permissible Exclusions	\$	\$	
G. School Tax Levy Limit, <u>Excluding</u> Levy for Permissible Exclusions	\$	\$	
H. Total Proposed School Year Tax Levy, <u>Excluding</u> Levy to Support Library Debt and/or Permissible Exclusions (E – B – F + D)	\$	\$	
I. Difference: G – H (Negative Value Requires 60.0% Voter Approval – See Note Below Regarding Separate Propositions) **	\$	\$	
Administrative Component	\$3,942,240	\$4,157,403	\$4,044,352
Program Component	\$23,833,630	\$24,536,077	\$24,327,745
Capital Component	\$8,142,356	\$8,713,630	\$8,354,269
* Provide a statement of assumptions made in projecting a contingency budget for the 2022-23 school year, should the proposed budget be defeated pursuant to Section 2023 of the Education Law.			
The 2022-2023 tax levy would be equal to the 2021-2022 tax levy. The Administrative portion of the budget would be capped at the 2020-2021 level of the overall budget. The Program and Capital portions of the budget would also decrease due to the cutting of all equipment purchases, transfer to capital fund for the annual Capital Outlay Project, no salary increases to employees not covered by a contract, potential athletic expenditures and any additional positions created by the defeated budget. In the event of a contingent budget, the actual allocations and expenditures may be different from the figures listed above.			
** List Separate Propositions that are not included in the Total Budgeted Amount: (Tax Levy associated with educational or transportation services propositions are not eligible for exclusion and may affect voter approval requirements)			
Description			Amount
BUS PROPOSITION			\$501,000
			\$
			\$
			\$

\*NOTE TO SCHOOL DISTRICT BUSINESS OFFICIALS: Please submit an electronic version (Word or PDF) of this completed form to: [emscmgts@nysed.gov](mailto:emscmgts@nysed.gov)

Under the Budget Proposed  
for the 2022-23 School Year

Estimated Basic STAR Exemption Savings<sup>1</sup>

\$ 375.00

The annual budget vote for the fiscal year 2022-23 by the qualified voters of the Skaneateles Central School District, Onondaga County, New York, will be held at the District Office, 45 E. Elizabeth Street, Skaneateles, NY 13152, in said district on Tuesday, May 17, 2022 between the hours of 7:00am and 9:00pm, prevailing time in the District Office), at which time the polls will be opened to vote by voting ballot or machine.

1. The basic school tax relief (STAR) exemption is authorized by section 425 of the Real Property Tax Law.